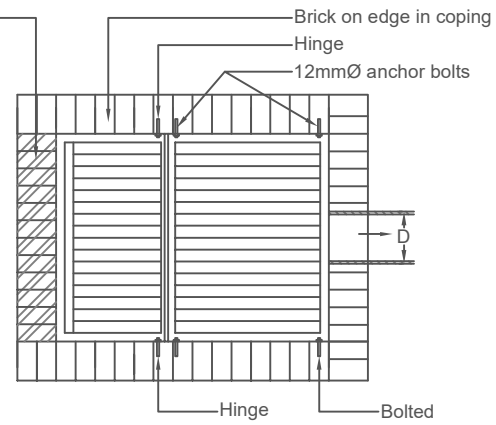


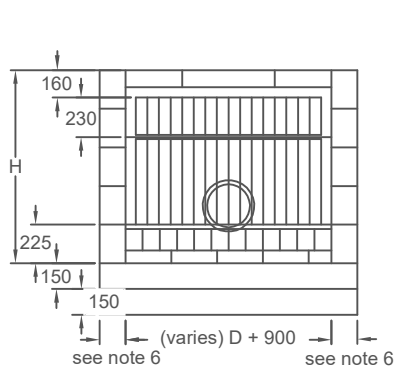
SIDE ELEVATION



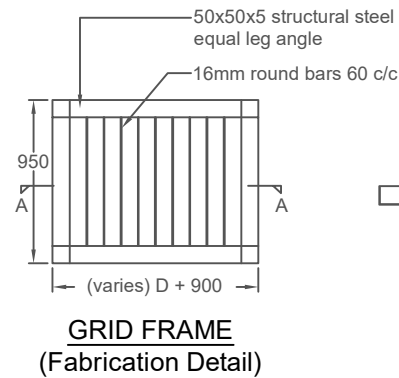
PLAN

Notes:

1. All dimensions are in millimetres unless shown otherwise.
2. All steel used in the construction of the grid and frame to be grade S275 to BS EN 10025:2 and hot dip galvanised in accordance with BS EN ISO 1461.
3. The grids shall be fabricated and erected to the requirements of BS 5950-2.
4. Anchor bolts shall be stainless steel through bolts complying with BS EN ISO 3506-1 with an anchor length of at least 100mm and suitable for use with the materials from which the headwall is constructed.
5. Cement mortar to be designation (i).
6. Brickwork to be:-
225 thick for H < 1.2m
337 thick for H > 1.2m.
7. For further information refer to Standard Details Guidance Note drawing no. HSD/100/001



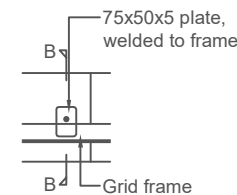
END ELEVATION



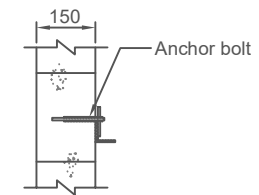
**GRID FRAME
(Fabrication Detail)**



SECTION A-A



**GRID FRAME
(Fixing Detail)**



SECTION B-B



DRAWING TITLE:
Headwalls - Type H4 - for Pipe Inlets 375mm Diameter
and Above with Silt Trap

SCALE: NTS

INITIALS:	CS	MS
DATE:	12/01/2024	12/01/2024

REV	AMENDMENTS	DRN	CHCK'D	DATE
DRAWING NO: HSD/500/185				