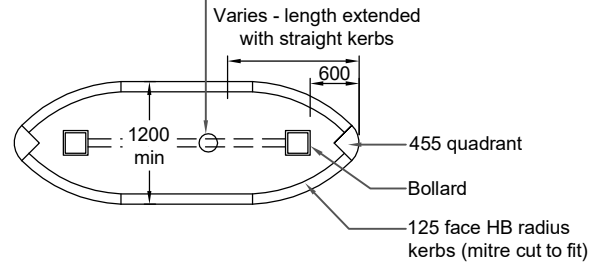


JUNCTION AND ROUNDABOUT ISLAND WITH PEDESTRIAN/CYCLIST REFUGE

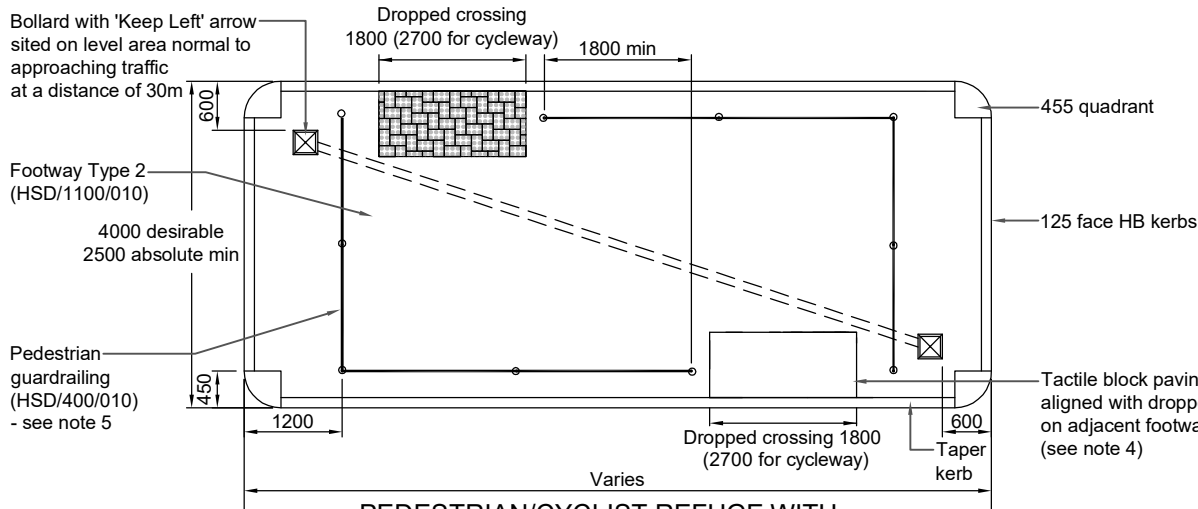
Keep Left arrow Diag. 610 or traffic signal. Height to underside of sign 2100



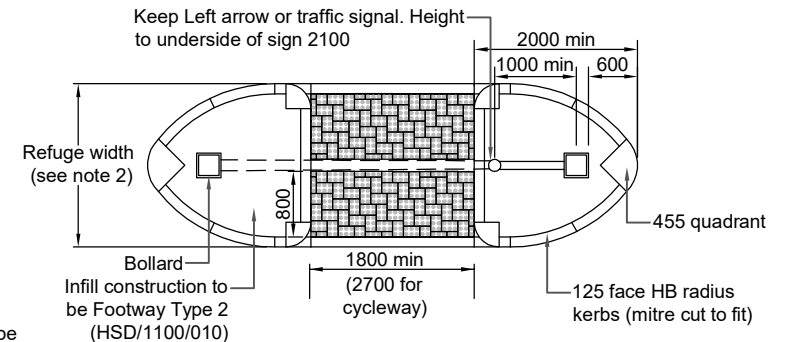
SEPARATION ISLANDS

Notes:

1. All dimensions are in millimetres unless otherwise specified.
2. Minimum island widths:
Separation island - 1200
Pedestrian refuge - 2000
Cycle refuge - 2500.
3. Kerb height at dropped crossing to be 0-6mm.
4. Tactile blocks to be buff colour at uncontrolled crossings and red at controlled crossings.
5. The guardrailling may be omitted subject to the approval of the OxonCC Engineer.
6. For further information refer to Standard Details Guidance Note drawing no. HSD/100/001



PEDESTRIAN/CYCLIST REFUGE WITH GUARDRAILING (see note 5)



PEDESTRIAN/CYCLIST REFUGE

DRAWING TITLE:

Series 1100: Kerbs, Footways and Paved Areas - Traffic Islands

SCALE: NTS

DRAWN

CHECKED

INITIALS:

CS

MS

DATE:

12/01/2024

12/01/2024

REV	AMENDMENTS	DRN	CHK'D	DATE

DRAWING NO:

HSD/1100/075

