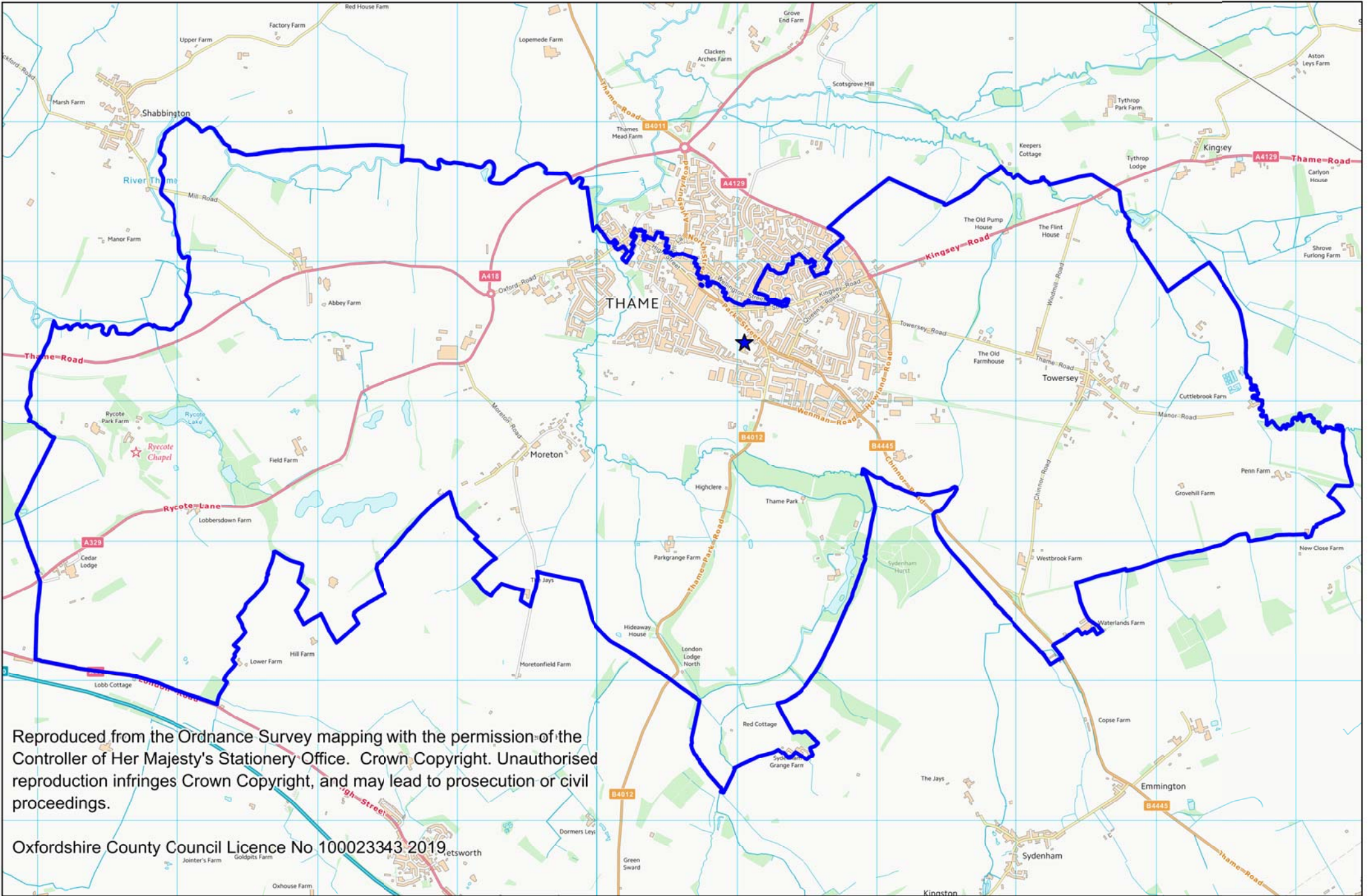


Current Designated Area of John Hampden Primary School until 31 August 2021



Reproduced from the Ordnance Survey mapping with the permission of the Controller of Her Majesty's Stationery Office. Crown Copyright. Unauthorised reproduction infringes Crown Copyright, and may lead to prosecution or civil proceedings.

Oxfordshire County Council Licence No 100023343 2019

Location and new designated area of John Hampden Primary School from 1 September 2021

