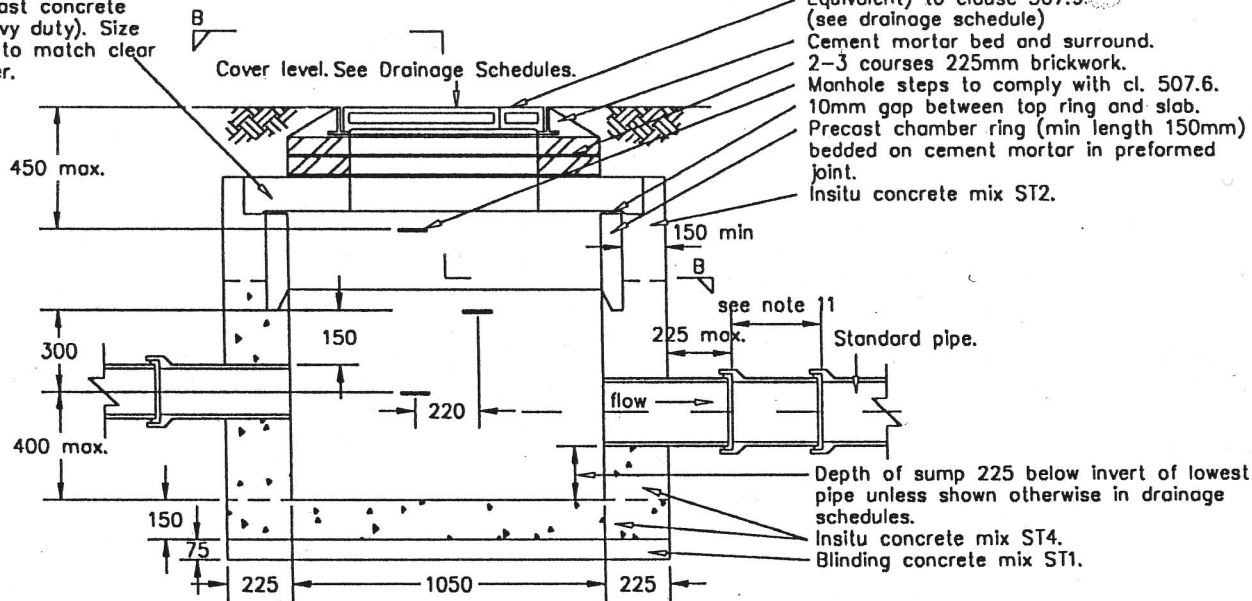


Reinforced precast concrete cover slab (heavy duty). Size of access hole to match clear opening of cover.



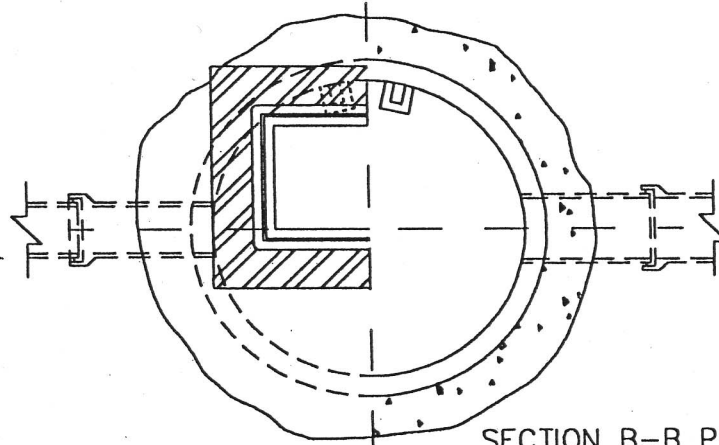
Ductile iron cover and frame (itemarked or Equivalent) to clause 507.9 (see drainage schedule)
 Cement mortar bed and surround.
 2-3 courses 225mm brickwork.
 Manhole steps to comply with cl. 507.6.
 10mm gap between top ring and slab.
 Precast chamber ring (min length 150mm) bedded on cement mortar in preformed joint.
 Insitu concrete mix ST2.

Standard pipe.

Depth of sump 225 below invert of lowest pipe unless shown otherwise in drainage schedules.
 Insitu concrete mix ST4.
 Blinding concrete mix ST1.

NOTES

1. All dimensions are in millimetres unless shown otherwise.
2. Ductile iron covers to catchpits to be positioned on side furthest from the carriageway where possible.
3. For detail of depths of individual catchpits and invert levels of pipes, see drainage schedules.
4. Bricks to be Class B clay engineering bricks to B.S. 3921 laid in accordance with the 2400 series in English Bond.
5. Cement mortar shall be mixed in the proportions given in Table 24/1. For mortar designation see Appendix 24/1.
6. Finish to internal concrete to be F2 on formed surfaces and U2 on unformed surfaces to clause 1708.
7. Standard concrete mixes shall comply with clause 2602.
8. Where specified on the layout, earthenware stoppers shall comply with B.S. 65.
9. Where gratings are provided as covers to the catchpits, the gratings shall be hinged on the side nearest the carriageway.
10. The length of articulated pipe shall be as required by table 5/6 of clause 507 at inlet and outlet.
11. Precast concrete units to clause 507.4.



SECTION B-B PRECAST CONCRETE DESIGN

| | | |
|------------------------|----------------------------------|------------|
| | | |
| e | Minor amendments | 10/98 |
| d | Minor amendments | 03.97 |
| c | Spec. 7th Ed. amendments. | 10.92 |
| b | Note 11 & top step iron amended. | 1.92 |
| a | Note 11 amended. | 12.90 |
| INDEX | AMENDMENT | DATE |
| DRAWING No. HSD/5/320e | | CATEGORY 1 |



David Young
 Director of Environmental Services
 Oxfordshire County Council
 Speedwell House, Speedwell Street,
 Oxford OX1 1NE
 Tel. Oxford 792422

CATCHPITS: Design Group C2 (Precast concrete design)

DRAINAGE

SCALE
 Not to Scale

| | |
|----------|---------|
| INITIALS | DATE |
| DRAWN | |
| TRACED | |
| CHECKED | 21.1.00 |

© Unauthorized reproduction infringes copyright