



Oxfordshire County Music Service
2011-2012

Oyma

*Oxfordshire Youth
Music Activities*



**OXFORDSHIRE
COUNTY COUNCIL**
www.oxfordshire.gov.uk
Working for you



Why join a musical activity?

- Experience shows that children who make most progress musically join in with musical activities and have fun making music with others.
- A sociable opportunity to make new friends with people who have similar interests.
- Good value for money - attend a whole morning making music from less than £5 per session.

What sort of activities can children & young people join?

- Musical groups and ensembles suitable for beginners and advanced musicians.
- A wide variety of genres including orchestras; string groups; wind bands, brass groups; big bands; jazz bands; rock and pop groups; choirs & many more.
- Groups meet at the Saturday morning Music Centres as well as other days of the week and during holidays.

How do I enrol a child or young person?

- Using this leaflet, find the activities available near you.
- Choose which activities you would like to join.
- Discuss your chosen options with the Music Service and your instrumental teacher.
- Attend a trial session at your chosen group/groups
- If you wish to join, complete an enrolment form available from: the taster session, the Centre for Music, or download a form online.
- Forms are to be returned to the address below.

**Oxfordshire County Music Service, Centre for Music,
Bayards Hill School,
Waynflote Road, Headington,
Oxford, OX3 8GA**

Email. music.service@oxfordshire.gov.uk

Tel. 01865 740000

Web. www.oxfordshire.gov.uk/music

How will my child progress?



ADVANCED



Oxfordshire County Youth Orchestra & Choir;
Oxfordshire Schools' Symphony Orchestra;
Oxfordshire Youth Wind Band & Big Band;
Oxfordshire Youth Music Theatre; Chamber Groups



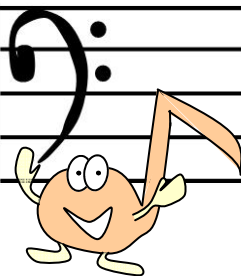
INTERMEDIATE

10 Music Centres across Oxfordshire plus:
Oxfordshire Schools' Orchestra; Oxford Area Strings;
Youth Big Bands; Oxford Area Wind Band; Oxfordshire Young
Singers - City; South Oxfordshire Youth Performing Arts



BEGINNERS

10 Music Centres Across Oxfordshire plus:
Workshops; Rock School;
Starter Choirs & Young Singers Groups;
Beginner Groups and Ensembles



North Oxfordshire Music Centre

9.30am - 12.00pm

*Banbury School
Ruskin Road, Banbury. OX16 8HY
Leader: Ian Smith, 07748 782972
ian.smith@oxfordshire.gov.uk*

Chipping Norton Music Centre

9.00am - 11.30am

*Chipping Norton School
Burford Road, Chipping Norton. OX7 5DY
Leader: Simon Gray (acting), 07767 310876
simon.gray@oxfordshire.gov.uk*

West Oxfordshire Music Centre

9.00am - 11.30am

*Queens Dyke Primary School
Burwell Drive, Witney. OX28 5JW
Leader: Estevan Ellul, 07920 084144
estevan.ellul@oxfordshire.gov.uk*

Vale Music Centre

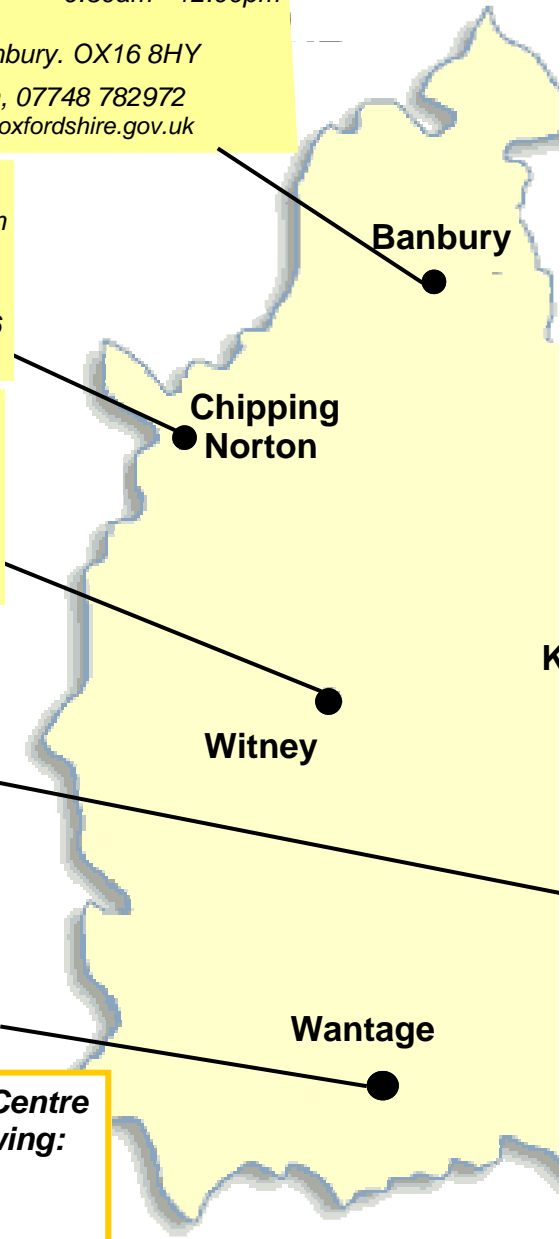
9.00am - 11.30am

*John Mason School
Wootton Road, Abingdon. OX14 1JB
Leader: Rosie Bruce, 07766 421773
rosie.bruce@oxfordshire.gov.uk*

Wantage Music Centre

9.00am - 11.30am

*King Alfred's School East Site
Springfield Road, Wantage. OX12 8ET
Leader: Susan Moss, 07833 237648
susan.moss@oxfordshire.gov.uk*



A Saturday morning at a Music Centre may include some of the following:

- Choir
- Wind Band/Big Band
- Instrumental Ensembles
- Beginner & Junior Groups
- Junior & Intermediate Orchestras
- Optional Music Theory
- Break & Tuck Shop

Morning Activities

Bicester Music Centre

9.15am - 11.45am

Glory Farm School
Sunderland Drive, Bicester. OX26 4YJ

Leader: Sarah Bourne-Taylor, 07767 692131
sarah.bourne-taylor@oxfordshire.gov.uk

How to join a Music Centre

Come along to a session and speak to the centre leader. To enrol, please complete an OYMA form available at the Music Centres or online www.oxfordshire.gov.uk/music

Kidlington Music Centre

9.00am - 11.30am

Gosford Hill School
Oxford Road, Kidlington. OX5 2NT

Leader: Chuck Lloyd, 07747 008384
charles.lloyd@oxfordshire.gov.uk

Oxford Music Centre

9.00am - 11.30am

St Gregory the Great Catholic School
Cricket Road, Cowley, Oxford. OX4 3RD

Leader: Stewart Attwood, 07817 256277
stewart.attwood@oxfordshire.gov.uk

Thame Music Centre

9.00am - 11.30am

Lord Williams's School
Oxford Road, Thame. OX9 2AQ

Leader: Mike Edwards, 07765 348933
mike.edwards@oxfordshire.gov.uk

Central Music School

Audition required 9.15am-12.45pm

Centre for Music, Bayards Hill School,
Waynfilete Road, Headington, OX3 8GA

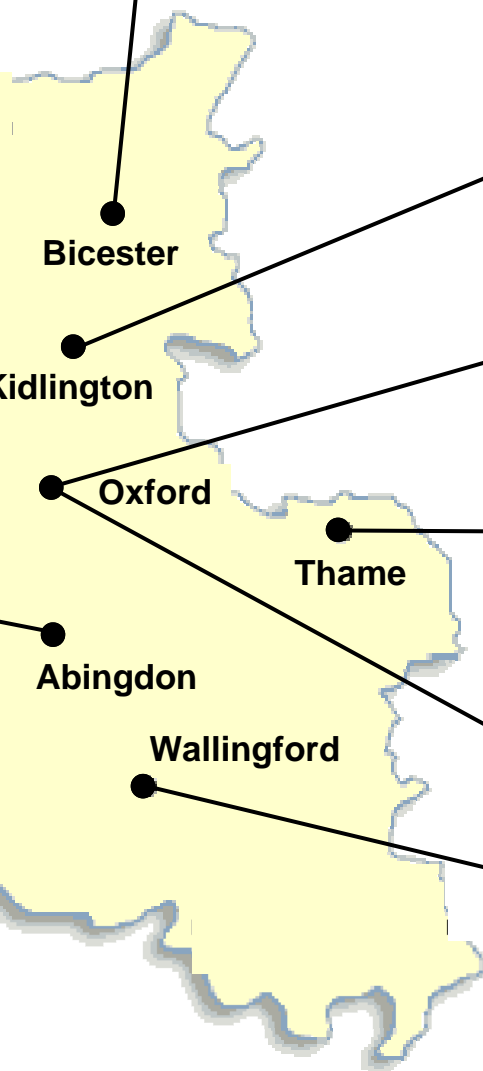
Leader: Tom Morter, 01865 740000

South Oxfordshire Music Centre

9.30am - 12.00pm

Wallingford School
Station Road, Wallingford. OX10 0LB

Leader: Lorna Waters, 07766 717463
lorna.waters@oxfordshire.gov.uk



Bicester

Kidlington

Oxford

Thame

Abingdon

Wallingford

Centre for Music Membership including: Sat OCYO/OSSO/OYWB

Music Service Pupil per term: £57.48 Non-Music Service Pupil per term: £72.78

This membership entitles you to attend all of the activities listed below including Standard and Single Membership activities.

Centre for Music, Waynflete Road, Headington, OX3 8GA

Oxfordshire County Youth Orchestra	Saturdays, 9:15am - 12.45pm
Oxfordshire Schools' Symphony Orchestra	Saturdays, 9:15am - 12.45pm
Oxfordshire Youth Wind Band	Saturdays, 9:15am - 12.45pm
Senior Chamber Ensembles	Wednesday, 7.00pm - 9.00pm

Standard Membership

Music Service Pupil per term: £47.10 Non-Music Service Pupil per term: £72.78

Standard Membership entitles you to attend one of our Music Centres and/or any of the activities listed below as well as the activities included under Single Membership.

Centre for Music, Waynflete Road, Headington, OX3 8GA

Oxfordshire Youth Big Bands - OYBB	Tuesday, 7.30pm - 9.30pm
Oxfordshire County Youth Choir - OCYC	Tuesday, 6.30pm - 8.00pm
Chamber Ensembles	Wednesday, 7.00pm - 9.00pm

Thomas Reade School, Radley Road, Abingdon, OX14 3RR

South Oxfordshire Youth Performing Arts	Wednesday, 7.00pm - 9.00pm
---	----------------------------

Single Ensemble Membership

Music Service Pupil per term: £31.35 Non-Music Service Pupil per term: £44.85

Single Membership entitles you to attend only one of the activities listed below.

Centre for Music, Waynflete Road, Headington, OX3 8GA

Oxfordshire Junior Percussion Ensemble	Wednesday, 6.15pm-7.30pm
Oxfordshire Youth Percussion Ensemble	Wednesday, 4.45pm-6.00pm
Oxfordshire Junior Bassoon Ensemble	Wednesday, 6.00pm-7.15pm

St. Andrew's School, London Road, Headington, OX3 9ED

Oxford Young Singers - City	Thursday, 4.30pm - 5.30pm
-----------------------------	---------------------------

Thomas Reade School, Radley Road, Abingdon, OX14 3RR

South Oxfordshire Starter Choir - SOSC	Wednesday, 5.00pm-5.55pm
South Oxfordshire Young Singers - SOYS	Wednesday, 6.00pm-6.55pm

St. Gregory the Great Catholic School, Cricket Road, Cowley, OX4 3DR

Oxford Area String Ensemble & Wind Band	Thursday, 4.30pm-6.00pm
---	-------------------------

Icknield Community College, Love Lane, Watlington, OX49 5RB

South Oxfordshire Youth Big Band	Tuesday, 5.45pm-7.15pm
----------------------------------	------------------------

The Music Service operates a three-term year

For more information about these activities, or for details about other groups, visit our website www.oxfordshire.gov.uk/music, email music.service@oxfordshire.gov.uk, or call 01865 740000

Other Music Service Activities with separate charging arrangements

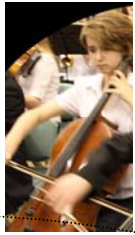
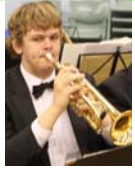
Oxfordshire County Youth Orchestra - Touring & Oxfordshire Schools' Symphony Orchestra - Touring

These orchestras meet in the school holidays. Most rehearsals take place at the Centre for Music, but there are also residential courses in the Easter break and a foreign concert tour at the end of July.

Cost: £695 to cover the cost of rehearsals, courses and tour.

OCYO members: Places for new members are via audition for students aged between 14 and 21 who are Grade 7 or above.

OSSO members: Places for new members are via audition for students aged 12 to 18 who are grade 5 standard and above.



Oxfordshire Youth Music Theatre

OYMT rehearse at the Centre for Music on Monday evenings & occasionally on Sundays.

Cost: £350 to cover the cost of rehearsals, music hire and show.

OYMT members: Places are via application and audition for students in year 10 and above.



Oxfordshire Young Musicians Courses

An opportunity for children in years 3 - 6 to make new friends and join in a variety of musical activities including singing, playing and trying new instruments, exploring sounds and a host of other musical experiences. No musical experience required.

Date: Tuesday 24 - Friday 27 July 2012 **Cost:** £85 for 4 days



Workshops

All workshops are held at the Centre for Music

Guitar - Saturday 10 December 2011

Rock & Pop - Monday 13 - Tuesday 14 February 2012

Recorder - Saturday 25 February 2012

Oxfordshire Schools' Orchestra

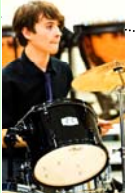
An opportunity for children aged 9 to 14, grade 3 - 5 to join the junior orchestra. OSO rehearse several times during the year at the Centre for Music and end the year with a 4 day residential in the New Forest.

Cost: £570 for the year

Rock School

An opportunity for children aged 11 to 18 to play in a band. Wednesdays, 7.00pm - 9.00pm at St. Gregory the Great School, Cricket Road, Oxford, OX4 3DR

Cost: £35 for 5 sessions



Oxfordshire County Music Service Calendar 2011-12

	Sep-11					Oct-11					Nov-11					
Mon		5	12	19	26		3	10	17	24	31		7	14	21	28
Tue		6	13	20	27		4	11	18	25		1	8	15	22	29
Wed		7	14	21	28		5	12	19	26		2	9	16	23	30
Thu	1	8	15	22	29		6	13	20	27		3	10	17	24	
Fri	2	9	16	23	30		7	14	21	28		4	11	18	25	
Sat	3	10	17	24		1	8	15	22	29		5	12	19	26	
Sun	4	11	18	25		2	9	16	23	30		6	13	20	27	
	Dec-11					Jan-12					Feb-12					
Mon		5	12	19	26		2	9	16	23	30		6	13	20	27
Tue		6	13	20	27		3	10	17	24	31		7	14	21	28
Wed		7	14	21	28		4	11	18	25		1	8	15	22	29
Thu	1	8	15	22	29		5	12	19	26		2	9	16	23	
Fri	2	9	16	23	30		6	13	20	27		3	10	17	24	
Sat	3	10	17	24	31		7	14	21	28		4	11	18	25	
Sun	4	11	18	25		1	8	15	22	29		5	12	19	26	
	Mar-12					Apr-12					May-12					
Mon		5	12	19	26		2	9	16	23	30		7	14	21	28
Tue		6	13	20	27		3	10	17	24		1	8	15	22	29
Wed		7	14	21	28		4	11	18	25		2	9	16	23	30
Thu	1	8	15	22	29		5	12	19	26		3	10	17	24	31
Fri	2	9	16	23	30		6	13	20	27		4	11	18	25	
Sat	3	10	17	24	31		7	14	21	28		5	12	19	26	
Sun	4	11	18	25		1	8	15	22	29		6	13	20	27	
	Jun-12					Jul-12					Aug-12					
Mon		4	11	18	25		2	9	16	23	30		6	13	20	27
Tue		5	12	19	26		3	10	17	24	31		7	14	21	28
Wed		6	13	20	27		4	11	18	25		1	8	15	22	29
Thu		7	14	21	28		5	12	19	26		2	9	16	23	30
Fri	1	8	15	22	29		6	13	20	27		3	10	17	24	31
Sat	2	9	16	23	30		7	14	21	28		4	11	18	25	
Sun	3	10	17	24		1	8	15	22	29		5	12	19	26	

KEY	
	Music Centres & Ensembles
	Touring Orchestras
	Half Term & Full Term Breaks

Within the indicated guideline weeks, Music Centres and Ensembles will operate a minimum of 30 sessions per year. Concerts may be *in addition*. Please check actual dates with Music Centre and Ensemble leaders who will publish termly ensemble-specific information.